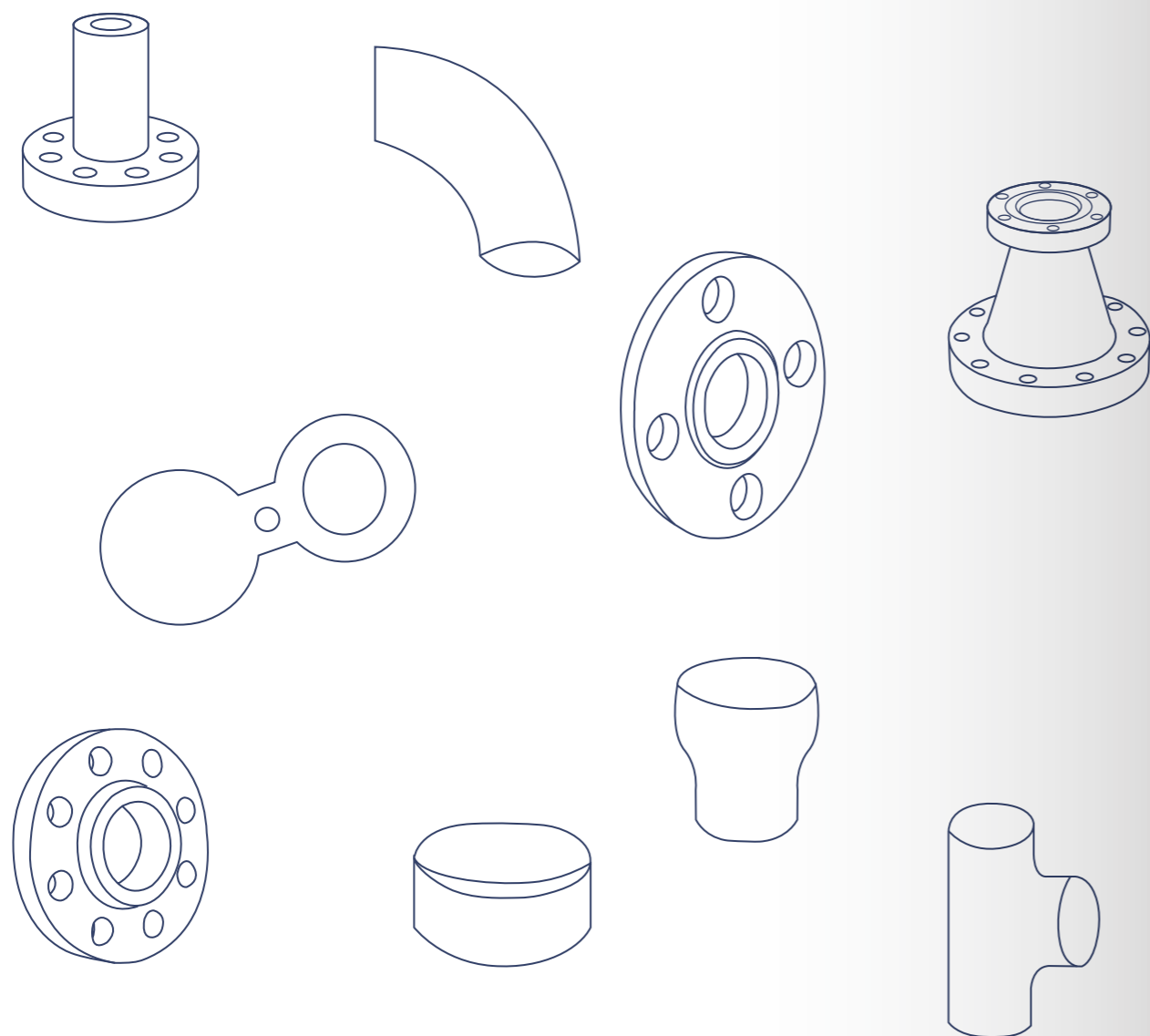




# ELITE PIPING MANUFACTURE

Co., Ltd



Web:[www.elitepiping.com](http://www.elitepiping.com)

E-mail:[elite@elitepiping.com](mailto:elite@elitepiping.com)

Tel/WhatsApp:+86 18618291381

Location:Office #805,building No.6 poly metropolitan,yongshun town, tongzhou district, Beijing,China

Factory address:Laodi village, Bazhou Town, Bazhou City Langfang Hebei  
People's republic of China



# Catalogue

Company Profile .....	1
Certificate .....	3
Products .....	5
Manufacture Equipment.....	11
Production Process Flow Chart.....	13
SS Materials Grade .....	15
Material Standard for Pipe Fittings.....	16
Outside Diameter and Wall Thickness and Weight .....	17

Standard .....	19
Quality.....	21
Inspection Equipments .....	23
NTD.....	25
Packing & Delivery.....	27
Application Industry .....	29
Our Customers.....	31



# Company Profile

01

02



Elite Piping Manufacture Co., Ltd is manufacturer and supplier of flanges, pipe fittings and line pipes. The manufacturing facility is located in Bazhou City, Hebei Province covering an area of 100,000 square meters, and possesses registered capital of 50 million yuan, the capital assets of 320 million yuan. The factory has a strong technical force supported with 380 employees, 122 Professionals, 16 Senior Engineers, and 28 Engineers and well-equipped with 280 advanced and updated equipment/processing machinery and capable to produce Flanges according to International Manufacturing Standards including ANSI, ISO, API, JIS, DIN, BS, MSS, GOST, etc.. and non-standard flanges according to the customized technical drawings.

The materials we adopt are Carbon Steel, Alloy Steel, Special Alloy, Stainless Steel, Duplex, Super Duplex and our products are mainly used for Oil & Gas, Power Plant, Fertilizer, Petrochemical, Metallurgy, Shipbuilding and allied industries.

We are successfully exporting our products to more than 25 countries throughout the world and over a period we have built an enviable reputation based on our commitment to quality.

## Standards

- ISO
- MSS
- JIS
- DIN
- ANSI
- API
- GOST
- BS

## Mission

To be the first choice of our customers by providing High-Quality Products, Competitive Pricing, Timely Deliveries and Quick Customers Service Support through our professionals with strong commitment Quality, Health, Safety and Environment.

## Vision

To develop our brand as Icon of Quality.

Elite Piping has stringent Quality Management and Control System to ensure the superior quality of products. All of our products are strictly inspected at each stage of the production process from the Inspection of Raw Material to the finished products. Each order is carried out as per Inspection / Test Plan, Required Specifications and Applicable Manufacturing / Quality Standards.



## Core Values



Name of Products	Name Diameter	Note	Material	Standard
Hot Induction Bend	DN15 -DN1500 (NPS1/2" -NPS60")	Bending Radius $R \leq 25000MM$ $R \leq 25000MM$	Carbon steel Alloyed steel Stainless steel Bimetal clad Nickel base alloy	API 5LD ASME B16.9 ASME B16.11 ASME B16.5 ISO 15590-1 MSS SP -75 ...
Elbow	DN15 -DN3200 (NPS1/2" -NPS128")	Long Radius and Short Radius Degree $\leq 180^\circ$		
Tee	DN15 -DN3200 (NPS1/2" -NPS128")	Congeneric Products:Cross		
Reducer	DN15 -DN3200 (NPS1/2" -NPS128")	Concentric and Eccentric		
Cap	DN15 -DN3200 (NPS1/2" -NPS128")	Ellipsoid and Regular		
Wrought Socket Fittings	DN6 -DN100 (NPS1/8" -NPS4")	Type:Elbow\Tee\Coupling\Outlet\Weldolet\Nipple etc.		
Wrought Thread Fittings	DN6 -DN100 (NPS1/8" -NPS4")			
Flange	DN15 -DN2500 (NPS1/2" -NPS100")	Type:PL\WN\SW\SO\TH		

## Stainless Steel Forged fittings



Bushing

Cap

Coupling



Cross



Elbow



Nipple



Union



Plug



Tee



Threadolets



Sockolets



Weldolets

## Stainless Steel Butt welded fittings



Elbow



Tee



Cap



Cross



Ecc Reducer



Con Reducer



Stub Ends



Bend

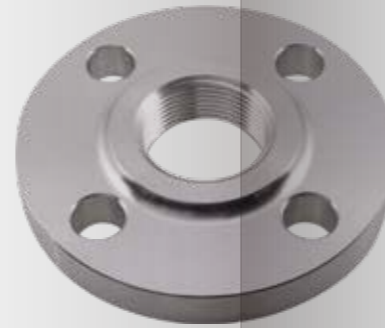
Stainless Steel Flange



Weld Neck Flange



Socket Weld Flange



Threaded Flange



API Flange



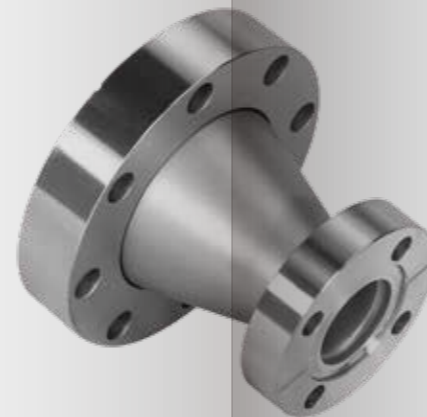
Lap Joint Flange



Long Weld Flange



Orifice Flange



Reducing Flange



Slip-on Flange



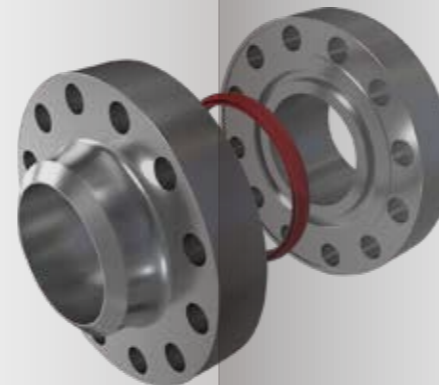
Blind Flange



Spectacle Blind Flange



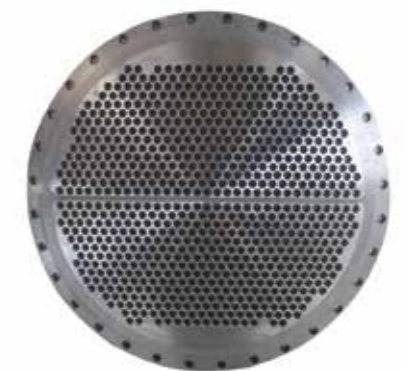
Swivel Ring Flange



Compact Flange



Anchor Flange



Customized

## Carbon Steel & Alloy Steel Butt Welded Fittings



Elbow



Tee



Cap



Bend



Ecc Reducer



Con Reducer



Cross



Stub End

## Carbon Steel & Alloy Steel Flanges



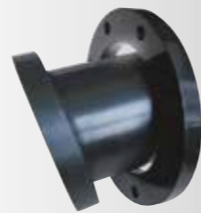
Weld Neck Flange



Blind Flange



Orifice Flange



Lap Joint flange



Socket Weld Flange



Threaded Flange

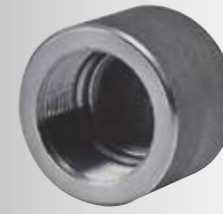


Swivel Ring flange



Anchor Flange

## Carbon Steel & Alloy Steel Forged fittings



Cap



Coupling



Cross



Elbow



Nipple



Olet



Tee



Union



Long Weld flange



Spectacle Blind flange



Reducing Flange



Slip-on Flange



API Flange



Compact Flange



Swivel Ring Connector



Customized

# Manufacture Equipment

11

12

Our advanced science and technology, first-rate production equipment and the superior process can ensure the quality, stability and reliability of the products. We rely on the key technology and create famous brands. No matter how the world changes, our persistent spirit for excellence will never change.

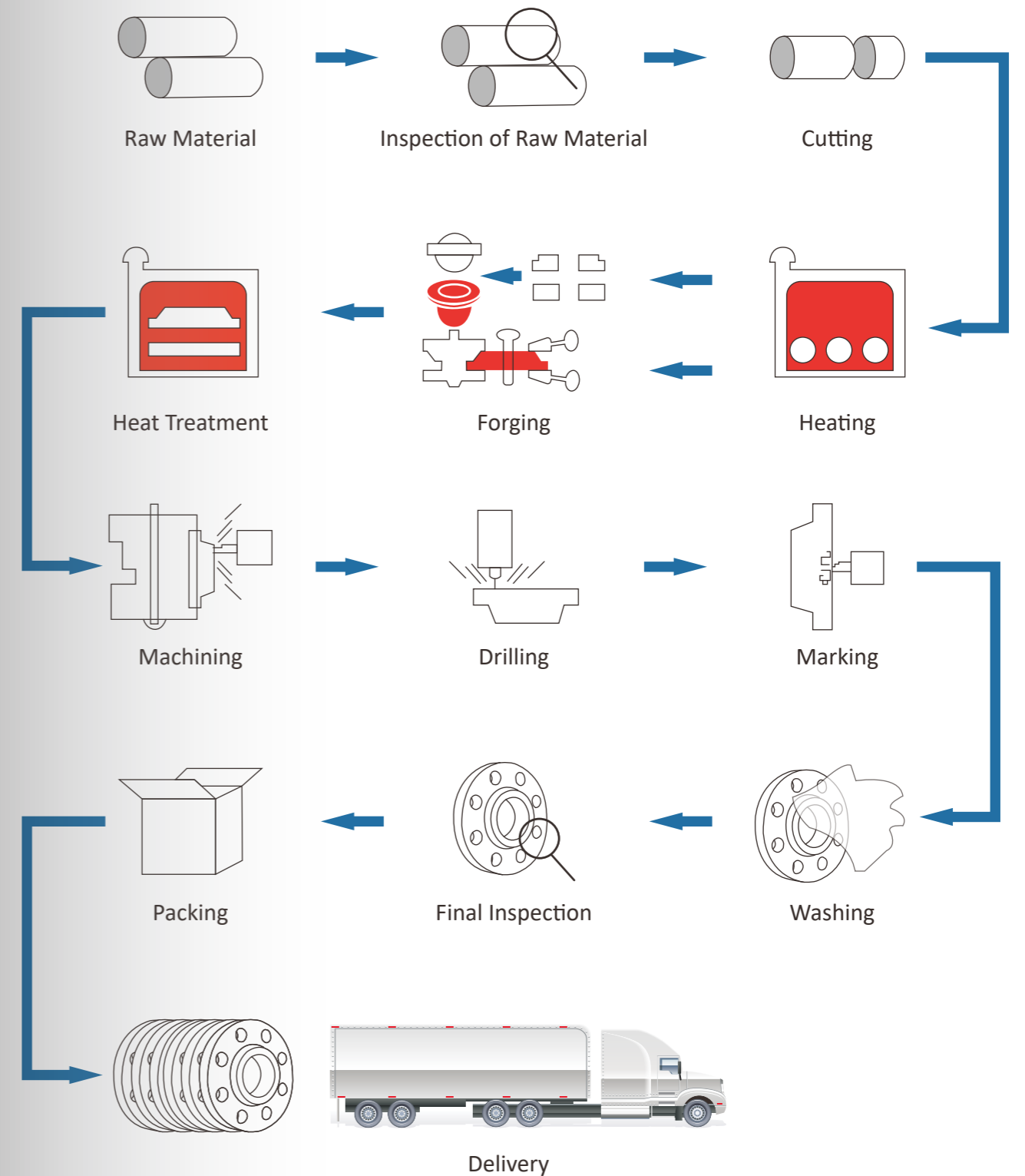
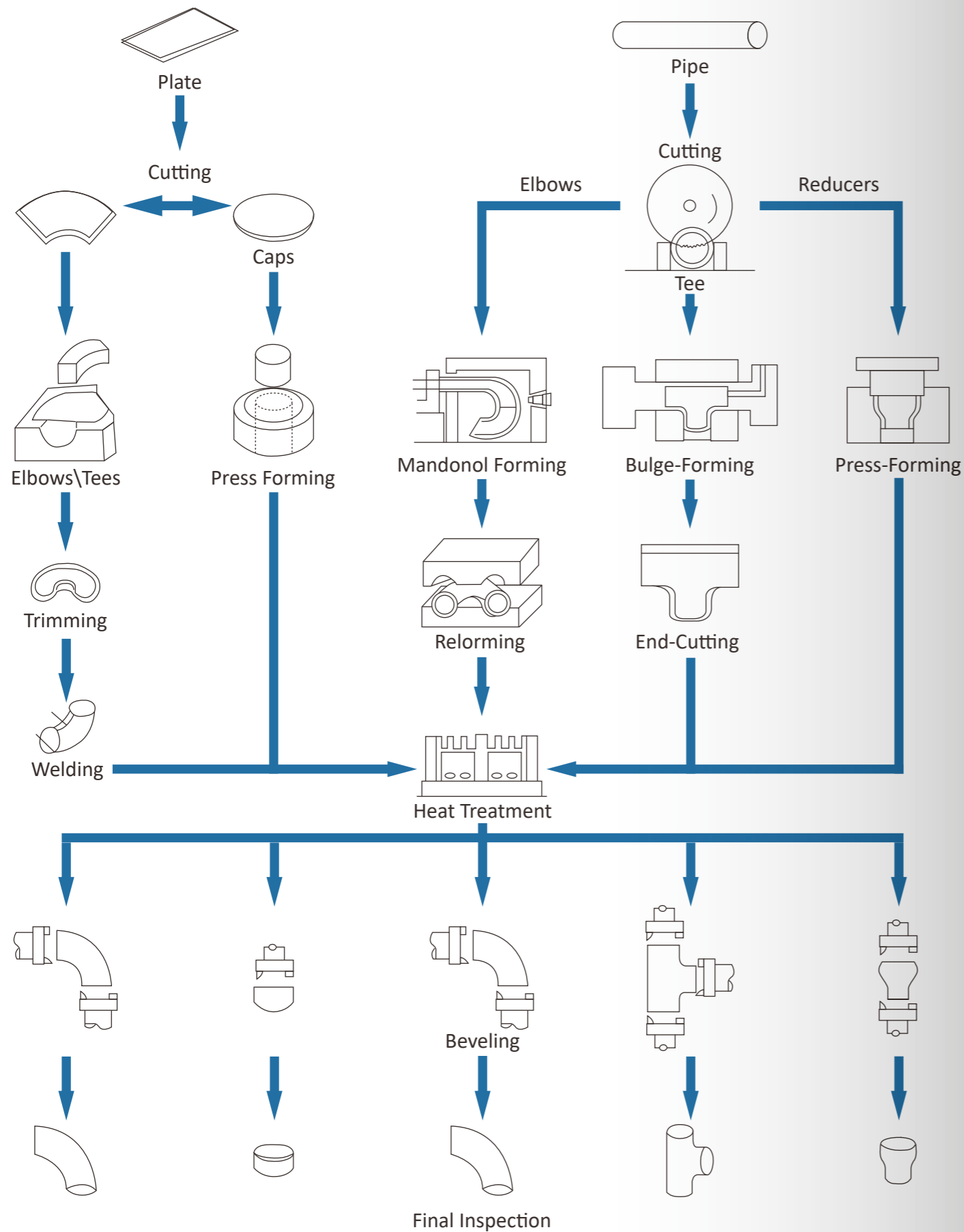




# Production Process Flow Chart

13

14



# SS Materials Grade

15

16

# Material Standard for Pipe Fittings

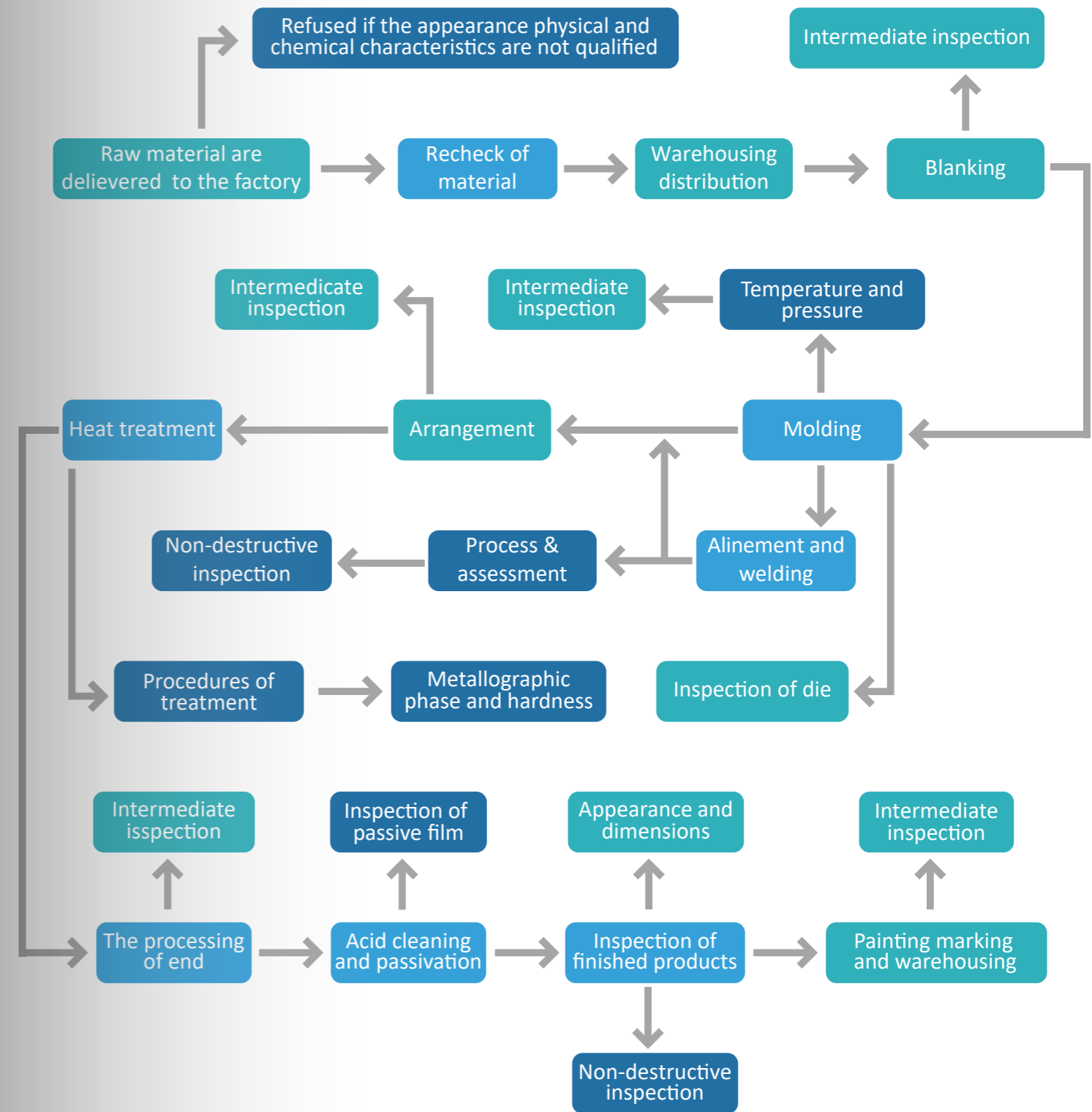
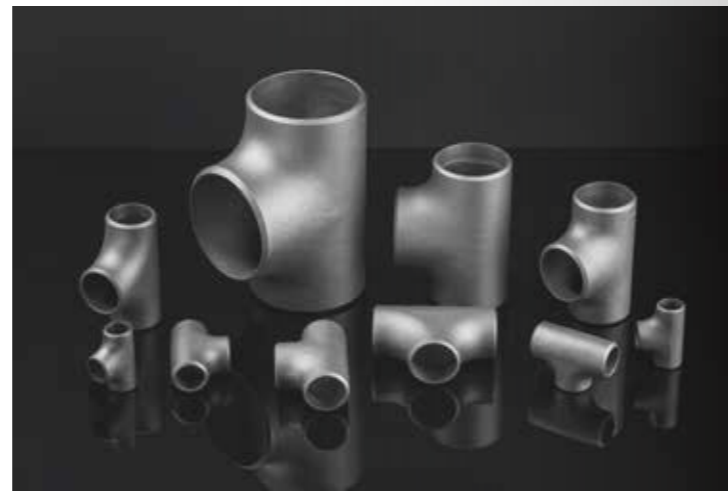
GB		JIS	ASTM/ASME		KS	BSEN
Old Grade	New Grade		ASI	UNS		
<b>Austenitic Stainless Steel</b>						
1Cr17Mn6Ni5N	12Cr17Mn6Ni5N	SUS201	201	S20100	STS201	1.4372
1Cr18Mn8Ni5N	12Cr18Mn9Ni5N	SUS202	202	S20200	STS202	1.4373
1Cr17Ni7	12Cr17Ni7	SUS301	301	S30100	STS301	1.4319
0Cr18Ni9	06Cr19Ni10	SUS304	304	S30400	STS304	1.4301
00Cr19Ni10	022Cr19Ni10	SUS304L	304L	S30403	STS304L	1.4306
0Cr19Ni9	06Cr19Ni10N	SUS304N1	304N	S30451	STS304N1	1.4315
0Cr19Ni10NbN	06Cr19Ni9NbN	SUS304N2	XM21	S30452	STS304N2	
00Cr18Ni10N	022Cr19Ni10N	SUS304LN	304LN	S30453	STS304LN	
1Cr18Ni12	10Cr18Ni12	SUS305	305	S30500	STS305	1.4303
1Cr23Ni13	06Cr23Ni13	SUS309S	309S	S30908	STS309S	1.4833
0Cr25Ni20	06Cr25Ni20	SUS310S	310S	S31008	STS310S	1.4845
0Cr17Ni12Mo2	06Cr17Ni12Mo2	SUS316	316	S31600	STS316	1.4401
0Cr18Ni12Mo3Ti	06Cr17Ni12Mo2Ti	SUS316Ti	316Ti	S31635		1.4571
00Cr17Ni14Mo2	022Cr17Ni12Mo2	SUS316L	SUS316L	S31603	STS316L	1.4404
0Cr17Ni12Mo2N	06Cr17Ni12Mo2N	SUS316N	SUS316N	S31651	STS316N	
00Cr17Ni13Mo2N	022Cr17Ni13Mo2N	SUS316LN	SUS316LN	S31653	STS316LN	1.4429
0Cr18Ni12Mo2Cu2	06Cr18Ni12Mo2Cu2	SUS316J1			STS316J1	
00Cr18Ni14Mo2Cu2	022Cr18Ni14Mo2Cu2	SUS316J1L			STS316J1L	
0Cr19Ni13Mo3	06Cr19Ni13Mo3	SUS317	317	S31700	STS317	
00Cr19Ni13Mo3	022Cr19Ni13Mo3	SUS317L	317L	S31703	STS317L	1.4438
0Cr18Ni10Ti	06Cr18Ni11Ti	SUS321	321	S32100	STS321	1.4541
0Cr18Ni11Nb	06Cr18Ni11Nb	SUS347	347	S34700	STS347	1.455
<b>Duplex Stainless Steel</b>						
0Cr26Ni5Mo2		SUS329J1	329	S32900	STS329J1	1.4477
00Cr18Ni5Mo3Si2	022Cr19Ni5Mo3Si2N	SUS329J3L		S31803	STS329J3L	1.4462
<b>Ferritic steels/Ferritic Stainless Steel</b>						
0Cr13A1	06Cr13A1	SUS405	405	S40500	STS405	1.4002
	022Cr11Ti	SUS409	409	S40900	STS409	1.4512
00Cr12	022Cr12	SUS410L			STS410L	
1Cr17	10Cr17	SUS430	430	S43000	STS430	1.4016
1Cr17Mo	10Cr17Mo	SUS434	434	S43400	STS434	1.4113
	022Cr18NbTi			S43940		1.4509
00Cr18Mo2	019Cr19Mo2NbTi	SUS444	444	S44400	STS444	1.4521
<b>Martensitic stainless steel</b>						
1Cr12	12Cr12	SUS403	403	S40300	STS403	
1Cr13	12Cr13	SUS410	410	S41000	STS410	1.4006
2Cr13	20Cr13	SUS420J1	420	S42000	STS420J1	1.4021
3Cr13	30Cr13	SUS420J2			STS420J2	1.4028
7Cr17	68Cr17	SUS440A	440A	S44002	STS440A	

Pipe	Fittings	Forgings
<b>Carbon Steel</b>		
ASTM A53 GRADE B	ASTM A234 WPB	ASTM A105N
ASTM A106 GRADE B	ASTM A234 WPB	ASTM A105N
API 5L GRADE B	ASTM A234 WPB	ASTM A105N
API 5L GRADE X 42/46/52/56/60/65/70	ASTM A860 WPHY 42/46/52/56/60/65/70	ASTM A694 F42/46/52/56/60/65/70
ASTM A333 GRADE 3	ASTM A420 WPL3	ASTM A350 LF3
ASTM A333 GRADE 6	ASTM A420 WPL6	ASTM A350 LF2
<b>Stainless Steel</b>		
ASTM A312 TP 304	ASTM A403 WP 304	ASTM A182 F304
ASTM A312 TP 304L	ASTM A403 WP 304L	ASTM A182 F304L
ASTM A312 TP 304H	ASTM A403 WP 304H	ASTM A182 F304H
ASTM A312 TP 316	ASTM A403 WP 316	ASTM A182 F316
ASTM A312 TP 316L	ASTM A403 WP 316L	ASTM A182 F316L
ASTM A312 TP 317	ASTM A403 WP 317	ASTM A182 F317
ASTM A312 TP 317L	ASTM A403 WP 317L	ASTM A182 F317L
ASTM A312 TP 321	ASTM A403 WP 321	ASTM A182 F321
ASTM A312 TP 310	ASTM A403 WP 310	ASTM A182 F310
ASTM A312 TP 347	ASTM A403 WP 347	ASTM A182 F347
<b>Alloy Steel</b>		
ASTM A335 GRADE P1	ASTM A234 WP1	ASTM A182 F1
ASTM A335 GRADE P5	ASTM A234 WP5	ASTM A182 F5
ASTM A335 GRADE P9	ASTM A234 WP9	ASTM A182 F9
ASTM A335 GRADE P11	ASTM A234 WP11	ASTM A182 F11
ASTM A335 GRADE P22	ASTM A234 WP22	ASTM A182 F22
ASTM A335 GRADE P91	ASTM A234 WP91	ASTM A182 F91
<b>Duplex 6 Mo</b>		
DUPLEX ASTM A790 UNS S31803	ASTM A815 UNS S31803	ASTM A185 F51
DUPLEX ASTM A790 UNS S32750/60	ASTM A815 UNS S32750/60	ASTM A185 F55
MO ASTM A790 UNS S31254	ASTM A815 UNS S31254	ASTM A185 F44



NOMINAL PIPE SIZE		OUTSIDE DIAMETER MM	NOMINAL WALL THICKNESS AND WEIGHT																																							
DN	NPS		SCH 5S		SCH 10S		SCH 10		SCH 20		SCH 30		SCH 40S		STD		SCH 40		SCH 60		SCH 80S		XS		SCH 80		SCH 100		SCH 120		SCH 140		SCH 160		XXS							
			Wall thickness	Weight kg/m	Wall thickness	Weight kg/m	Wall thickness	Weight kg/m	Wall thickness	Weight kg/m	Wall thickness	Weight kg/m	Wall thickness	Weight kg/m	Wall thickness	Weight kg/m	Wall thickness	Weight kg/m	Wall thickness	Weight kg/m	Wall thickness	Weight kg/m	Wall thickness	Weight kg/m	Wall thickness	Weight kg/m	Wall thickness	Weight kg/m	Wall thickness	Weight kg/m	Wall thickness	Weight kg/m	Wall thickness	Weight kg/m	Wall thickness	Weight kg/m						
6	1/8	10.3	--		1.24	0.28	1.24	0.28	--		1.45	0.32	1.73	0.37	1.73	0.37	1.73	0.37	--		2.41	0.48	2.41	0.47	2.41	0.47	--		--		--		--		--		--					
8	1/4	13.7	--		1.65	0.51	1.65	0.49	--		1.85	0.54	2.24	0.63	2.24	0.63	2.24	0.63	--		3.02	0.82	3.02	0.8	3.02	0.8	--		--		--		--		--		--					
10	3/8	17.1	--		1.65	0.64	1.65	0.63	--		1.85	0.7	2.31	0.84	2.31	0.84	2.31	0.84	--		3.2	1.12	3.2	1.1	3.2	1.1	--		--		--		--		--		--					
15	1/2	21.3	1.65	0.8	2.11	1.01	2.11	1	--		2.41	1.12	2.77	1.27	2.77	1.27	2.77	1.27	--		3.73	1.65	3.73	1.62	3.73	1.62	--		--		--		4.78	1.95	7.47	2.55						
20	3/4	26.7	1.65	1.02	2.11	1.31	2.11	1.28	--		2.41	1.44	2.87	1.69	2.87	1.69	2.87	1.69	--		3.91	2.24	3.91	2.2	3.91	2.2	--		--		--		5.56	2.9	7.82	3.64						
25	1	33.4	1.65	1.29	2.77	2.13	2.77	2.09	--		2.9	2.18	3.38	2.5	3.38	2.5	3.38	2.5	--		4.55	3.29	4.55	3.24	4.55	3.24	--		--		--		6.35	4.24	9.09	5.45						
32	1 1/4	42.2	1.65	1.65	2.77	2.76	2.77	2.69	--		2.97	2.87	3.56	3.39	3.56	3.39	3.56	3.39	--		4.85	4.56	4.85	4.47	4.85	4.47	--		--		--		6.35	5.61	9.7	7.77						
40	1 1/2	48.3	1.65	1.9	2.77	3.1	2.77	3.11	--		3.18	3.54	3.68	4.05	3.68	4.05	3.68	4.05	--		5.08	5.51	5.08	5.41	5.08	5.41	--		--		--		7.14	7.25	10.15	9.56						
50	2	60.3	1.65	2.39	2.77	4.01	2.77	3.93	--		3.18	4.48	3.91	5.44	3.91	5.44	3.91	5.44	--		5.54	7.63	5.54	7.48	5.54	7.48	--		--		--		8.74	11.11	11.07	13.44						
65	2 1/2	73	2.11	3.69	3.05	5.36	3.05	5.26	--		4.78	8.04	5.16	8.63	5.16	8.63	5.16	8.63	--		7.01	11.64	7.01	11.41	7.01	11.41	--		--		--		9.53	14.92	14.02	20.39						
80	3	88.9	2.11	4.52	3.05	6.69	3.05	6.46	--		4.78	9.92	5.49	11.29	5.49	11.29	5.49	11.29	--		7.62	15.59	7.62	15.27	7.62	15.27	--		--		--		11.13	21.35	15.24	27.68						
90	3 1/2	101.6	2.11	5.18	3.05	7.55	3.05	7.41	--		4.78	11.41	5.74	13.57	5.74	13.57	5.74	13.57	--		8.08	19.01	8.08	18.63	8.08	18.63	--		--		--		--		--		--					
100	4	114.3	2.11	5.84	3.05	8.52	3.05	8.37	--		4.78	12.91	6.02	16.07	6.02	16.07	6.02	16.07	--		8.56	22.77	8.56	22.32	8.56	22.32	--		11.13	28.32	--		13.49	33.54	17.12	41.03						
125	5	141.3	2.77	9.46	3.4	11.82	3.4	11.56	--		--		6.55	21.77	6.55	21.77	6.55	21.77	--		9.53	31.59	9.53	30.97	9.53	30.97	--		12.7	40.26	--		15.88	49.11	19.05	57.43						
150	6	168.3	2.77	11.31	3.4	14.13	3.4	13.83	--		--		7.11	28.26	7.11	28.26	7.11	28.26	--		10.97	43.42	10.97	42.56	10.97	42.56	--		14.27	54.2	--		18.26	67.56	21.95	79.22						
200	8	219.1	2.77	14.78	3.76	20.37	3.76	19.97	6.35	33.31	7.04	36.81	8.18	42.55	8.18	42.55	8.18	42.55	10.31	53.08	12.7	65.95	12.7	64.64	12.7	64.64	15.09	75.92	18.26	90.44	20.62	100.92	23.01	111.27	22.23	107.92						
250	10	273	3.4	22.61	4.19	28.34	4.19	27.79	6.35	41.77	7.8	51.03	9.27	60.31	9.27	60.31	9.27	60.31	12.7	81.55	12.7	83.19	12.7	81.55	15.09	96.01	18.26	114.75	21.44	133.06	25.4	155.15	28.58	172.33	25.4	155.15						
300	12	323.8	3.96	31.24	4.57	36.73	4.57	35.99	6.35	49.73	8.38	65.2	9.53	73.88	9.53	73.88	10.31	79.73	14.27	108.96	12.7	99.43	12.7	97.46	17.48	132.08	21.44	159.91	25.4	186.75	28.58	208.14	33.32	238.76	25.4	186.97						
350	14	356.6	3.96	34.34	4.78	42.14	6.35	54.69	7.92	67.9	9.53	81.33	--		9.53	81.33	11.13	94.55	15.09	126.71	--		12.7	107.39	19.05	158.1	23.83	194.96	27.79	224.65	31.75	253.56	35.71	281.7	--							
400	16	406.4	4.19	41.56	4.78	48.26	6.35	62.64	7.92	77.83	9.53	93.27	--		9.53	93.27	12.7	123.3	16.66	160.12	--		12.7	123.3	21.44	203.53	26.19	245.56	30.96	286.64	36.53	333.19	40.49	365.35	--							
450	18	457	4.19	46.81	4.78	54.36	6.35	70.6	7.92	87.75	11.13	122.43	--		9.53	105.21	14.27	155.87	19.05	205.74	--		12.7	139.21	23.83	254.67	29.36	309.62	34.93	363.56	39.67	408.26	45.24	459.37	--							
500	20	508	4.78	59.32	5.54	70	6.35	78.55	9.53	117.15	12.7	155.12	--		9.53	117.15	15.09	183.42	20.62	247.83	--		12.7	155.12	26.19	311.17	32.54	381.53	38.1	441.49	44.45	508.11	50.01	564.81	--							
--	22	559	4.78	65.33	5.54	77.06	6.35	86.54	9.53	129.13	12.7	171.09	--		9.53	129.13	--		22.23	294.25	--		12.7	171.09	28.58	373.83	34.93	451.42	41.28	527.02	47.63	600.63	53.98	672.26	--							
600	24	610	5.54	82.58	6.35	96.37	6.35	94.53	9.53	141.12	14.27	209.64	--		9.53	141.12	17.48	255.41	24.61	355.26	--		12.7	187.06	30.96	442.08	38.89	547.71	46.02	640.03	52.37	720.15	59.54	808.22	--							
--	26	660	--		--		7.92	127.36	12.7	202.72	--		--		9.53	152.87	--		--		--		12.7	202.72	--		--		--		--		--		--		--		--			
700	28	711	--		--		7.92	137.32	12.7	218.69	15.88	272.21	--		9.53	164.85	--		--		--		12.7	218.69	--		--		--		--		--		--		--		--		--	
--	30	762	6.35	118.33	7.92	150.36	7.92	147.28	12.7	234.67	15.88	292.18	--		9.53	176.84	--		--		--		12.7	234.67	--		--		--		--		--		--		--		--		--	
800	32	813	--		--		7.92	157.24	12.7	250.64	15.88	312.15	--		9.53	188.82	17.48	342.91	--		--		12.7	250.64	--		--		--		--		--		--		--		--		--	
--	34	864	--		--		7.92	167.2	12.7	266.61	15.88	332.12	--		9.53	200.81	17.48	364.9	--		--		12.7	266.61	--		--		--		--		--		--		--		--		--	
900	36	914	--		--		7.92	176.96	12.7	282.27	15.88	351.7	--		9.53	212.56	19.05	420.42	--		--		12.7	282.27	--		--		--		--		--		--		--		--		--	
--	38	965	--		--		--		--		--		--		9.53	224.54	--		--		--		12.7	298.24	--		--		--		--		--		--		--		--		--	
1000	40	1016	--		--		--		--		--		--		9.53	236.53	--		--		--		12.7	314.22	--		--		--		--		--		--		--		--		--	
--	42	1067	--		--		--		--		--		--		9.53	248.52	--		--		--		12.7	330.19	--		--		--		--		--		--		--		--		--	
1100	44	1118	--		--		--		--		--		--		9.53	260.5	--		--		--		12.7	346.16	--		--		--		--		--		--		--		--		--	
--	46	1168	--		--		--		--		--		--		9.53	272.25	--		--		--		12.7	361.82	--		--		--		--		--		--		--		--		--	
1200	48	1219	--		--		--		--		--		--		9.53	284.24	--		--		--		12.7	377.79	--		--		--		--		--		--		--		--		--	

National Standards	Industrial Standards	ASME Standards	MSS Standards	EN Standards	JIS Standards	Other Standards
GB/T 4450	DL/T 515, HG/T 20592	ASME B16.5	MSS SP-43	DIN EN 1092-1	JIS B2311	According to customer standards
GB/T 9112-9124	HG/T 20615, HG/T 21547	ASME B16.9	MSS SP-44	DIN EN 1092-2	JIS B2312	
GB/T 12459	HG/T 21632, HG/T 21641	ASME B16.11	MSS SP-75	DIN EN 10253-1	JIS B2313	
GB/T 13401	JB 4728, NB/T 47010	ASME B16.20	MSS SP-83	DIN EN 10253-2	JIS B2316	
GB/T 14383	NB/T 47021, NB/T 47022	ASME B16.36	MSS SP-95	DIN EN 10253-3	JIS B2220	
GB/T 19326	NB/T 47023, NB/T 47014	ASME B16.47	MSS SP-97	DIN EN 10253-4	.....	
GB-T 2506	SH3501, SH/T 3065,	ASME B16.48	.....	ISO 9001		
GB50235	SH/T 3406, SH/T 3408,	ASME B31.3				
GB50236	SH/T 3410, SY/T 0510	ASME IX				
.....	SY/T 5257	.....				
.....	.....	.....				



Quality control process  
 Control process

Elite Piping quality controls the entire manufacturing process. All products are subject to strict in-process inspection at each stage of the production process, from starting material handling to finished product shipping. They are visually examined for conformity to Elite company specifications and checked and tested in accordance with applicable ASTM, ASME, MSS, DIN, EN, and JIS codes and standards. Upon request, officially certified test agents can be called in to witness the inspection procedures.



## Material Receiving Inspections

Material inspections are carried out as follows.

1. Dimensional Inspection  
Dimensions are checked at each end of the purchased material.
2. Visual Inspection  
Surface check to ensure that material is correct and suitable for production of products.
3. Collating  
Tests are done to ensure that the chemical composition and tensile properties of the described items are exactly as shown in the material certificates.



## In-process Inspections

ELITE FLANGE products are manufactured from carefully selected materials of the finest metallurgical quality on well-controlled jigs, tools and molds. In order to ensure that all products meet quality specifications, the following in-process inspections are performed.

- Visual Inspection
- Dimensional Inspection
- Shape Inspection
- Hardness Test
- Temperature Check
- Processing Conditions Check
- Material Identification (marking)
- Other Inspections



## Final Inspections

ELITE FLANGE products are subject to the following final inspections before they are packed and delivered.

1. Visual Inspection  
Both internal and external surfaces are checked to confirm they are smooth and do not bear any harmful defects.
2. Dimensional Inspection  
Done to ensure that all products are in conformity with dimensional tolerances of relevant Codes and standards.
3. Special Inspection  
Non-destructive examinations and mechanical tests are performed as per customer's Request.
4. Certification  
ELITE FLANGE inspection certificates are issued in accordance with DIN 50049/EN10204 unless otherwise requested by customers.



## Third-party Inspections

ELITE FLANGE products subject to this inspection are made from starting materials stipulated by the regulations of the inspection body, e.g. BV, LR, DNV, SGS, etc. The starting materials and finished products are inspected for appearance, dimensions, and conformity to designated codes and specifications. The inspection body witnesses and certifies the inspections and issues certificates or report of findings to customers.

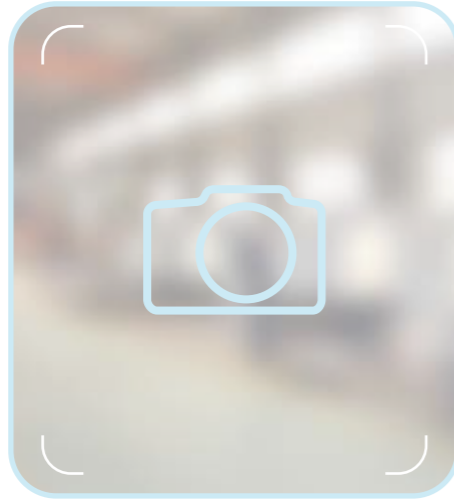
# Inspection Equipments

23

24



PMI



Metallurgical Microscope and Evaluation System



X-ray Fluorescence Detector



Belec Spectrum Analyzer



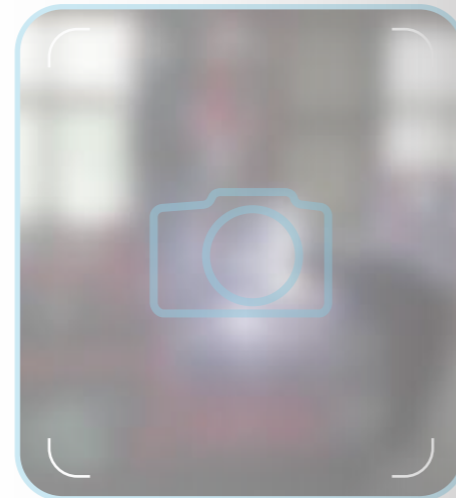
Grooving Machine



500J Impact Testing Machine



Low Temperature Tank



Oxford Spectrum Analyzer



Spectrometer



1000KN Electro-hydraulic Servo tensile Testing Machine



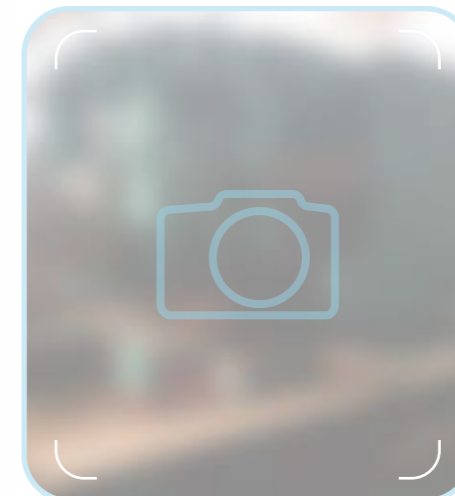
Brinell-hardness Tester



Carbon Sulfur Analyzer



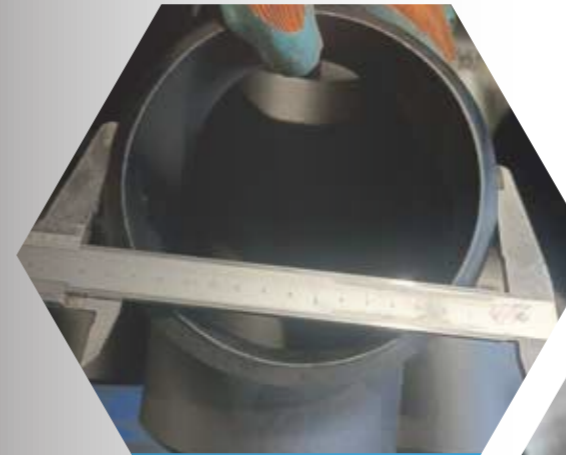
Densitometer



Three Elements Analyzer



PT



Measuring Diameter



UT



Measuring Thickness



MT



UT for Wall Thickness



Measuring Wall Thickness



Measuring Bevel Angle



Positive Material Identification



Hardness Test



Measuring Thickness



Length Measurement

# Packing & Delivery

27

28





# Application Industry

29

30

OFFSHORE



OIL & GAS TRANSPORTATION



CHEMICAL



PETROLEUM



POWER GENERATION



PHARMACY



The products are widely used in different fields including petroleum, natural gas, chemical industry, power generation, ocean projects, vessel, iron and steel, pharmacy, water supply and drainage.



# Our Customers

31

32

# Sales Network

Analyzing the market achieving great success

The market is our living space. Customers' satisfaction is our work objective. The products we provide are the requirements of customers. Our service spreads all over China. Our value is improving with customers' demands. We are aware that our satisfaction is from customers' long-term trust. If products that meet customers' demands were not provided by our company, we would lose customers' trust and fail to develop continuously.

